

# Plano Model Products - #303 - 65ft L.P. Tank Car Walkway with Outside Side Mounted Handrails - Wm. K. Walthers Cars

This Plano Model Products L.P. tank car walkway kit is designed to replace the standard walkway of the Walthers car to represent side mounted walkways and handrails used by Trinity Industries. Before starting, read through these instructions carefully and familiarize yourself with them and the parts.

A couple notes before starting. On the parts to be bent, look closely at both sides. On one side you should see small half etch score lines. At these score lines, bend the part carefully using a pair of tweezers. *Note: these score lines are to be on the inside of the bend unless otherwise instructed.* Most parts are held together with a fret framework to protect them from loss and damage. Carefully trim parts to match illustrations in these instructions. Trim stainless parts as close to walkways and platforms as possible. **WARNING: ALL MATERIAL IN THIS KIT CAN BE VERY SHARP AND CLIPPED PIECES CAN FLY. PLEASE WEAR EYE PROTECTION!**

**Glue options** CA is suggested when glueing mounting pins into holes. Glueing platforms in place can be done using Canopy glue or contact cement.

## Preparing car

Assuming you are building a kit, assemble the two halves of the tank and attach the ends per the cars instructions. Using the supplied styrene, plug the holes in the top of the tank and the slots on the sides of the tank. Allow to dry and file or sand smooth.

Cut out paper drill template on small dashed lines and cut out the center circle to fit over the dome. Tape template to the car so the ends are even with 'tank halves ends' and the edge of the template with the arrows is on the center line of the car. Using the supplied "T" pin, press a pilot point in the center of each "+" tic mark on the template. Remove the template and using a #78 drill bit, drill a hole in each of the pilot points keeping the drill as vertical as possible.

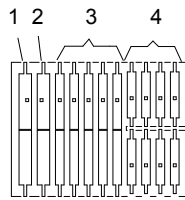
## Building new ends

Carefully remove the molded on end platform walkways from the end bolsters. Position new walkways in their place and glue in place. Use caution to get the one with the hole on the "B" end. Drill #71 holes for the end handrails. Install handrails in holes but DO NOT cement in place yet. Add brake equipment, lines, stirrups and any other details at this time. May we also suggest our Stainless Placard Frames #310.

## Building car

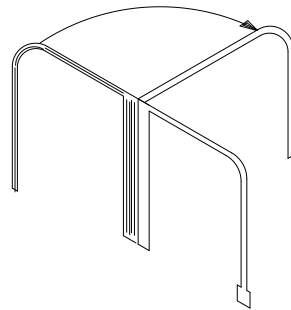
Assemble the rest of the car per Walthers instructions. For the addition of the new walkway supports, there are four different supports used in this kit. Supports #1 (LH) and #2 (RH) are the same except for the location of the holes in them. These center

platform supports are placed with the small hole to the outside of the platform. Supports #3 are the supports for the center of the center platform. Supports #4 are the supports for the long-side walkways (see diagram below for additional reference). Remove supports from their framework and look



closely at both sides. On one side of supports #1, #2 & #3 you will see score lines dividing the supports in two sections. At these score lines, bend the legs down 90 degrees and the mounting pins down in the same direction leaving you a "U" shaped support. At the holes in supports #4 bend the legs down 90 degrees along with the mounting pins. On the paper template you should have noticed numbers between the tic marks. These numbers specify which supports to use where. With these numbers in mind, position the mounting pins of the supports in the drilled holes and CA. in place.

The two large center platforms can now be added. Center one of these platforms on the supports on each side of the dome and glue in place. DO NOT add the long walkways at this time. To form and add the side platform stanchions / handrails, begin by cutting the parts apart to match those of the diagram on the back of these instructions. Next look closely to notice how the stanchion is divided in two by an etch line down the center of the stanchion. Carefully bend the parts 90 degrees at this etch line using the diagram below as a guide (diagram shows a left hand

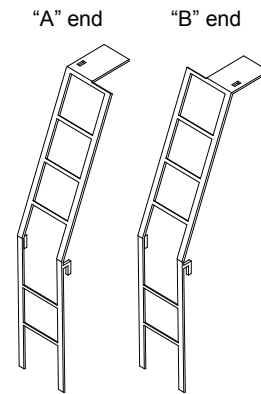


handrail bent to shape). Keep in mind there is a left and right to these parts when bending. Insert the mounting pin of these handrails in the holes of the supports #1 or #2. The longer handrail section stretches across the car and inserts into the drilled holes (#5's) on each side of the dome. The short handrail section sits down in a convenient slot in the platform straight out from the stanchion. Adjust to your satisfaction and CA. in place. The CA. may be applied to the bottom side of the handrails coming through the platform to keep CA. from filling in the platform slots. Next cut the long handrails apart to match diagram. DO NOT trim the mounting pins on the bottom of the stanchion as these will need to be long for mounting purposes. Now place these long mounting pins in the holes of supports #4 (the pin fitting in support #3 does not need to be

as long). Square up with mounting pins against inside edge of supports and CA. in place.

To add the remaining long walkways to the car, center a walkway on supports, against stanchions and against center platform. Square up to your satisfaction. When satisfied with placement glue to supports. Repeat with the other walkway.

After walkways are firmly attached to car, the end ladders need to be bent and added to car ends. Start by bending top of ladder not quite 90 degrees. Again there is a left and



right to these parts, use diagram to the left for additional reference. Next bend the top half of the ladder back about 10 degrees just above the little hooks on each side of the ladder. Now bend the little hooks back 90 degrees in the same direction as the top of the ladder.

Test fit ladder on end of car. The top of the ladder rests up against the bottom of the end of the long walkway and the small hole in the top section should be visible through the walkway and to the outside edge of the walkway. The middle of the ladder wraps over the outside of the handrail and the little hooks fit down over the handrail holding them together. The bottom of the ladder sits to the inside edge of the end platform walkway and rests against the walkway. Adjust handrail and ladder until satisfied and CA. all parts together. Insert the end of the handrail into the hole in the top- (bent section) of the ladder and CA. in place.

Touch up paint and finish model to your satisfaction.

This should complete the walkway detail replacement on your LP tank car. We hope you enjoyed adding our kit to your car and would like to suggest our other two LP tank car walkway kits for future modeling. Kit #13020 is a Center mounted walkway like that of the Walthers kit and Kit #304 is a General-American style side mounted walkway with inside handrails. If you would like to know what other products we have to offer, please see your local dealer about our line of photo-etched products or visit us online -

[www.planomodelproducts.com](http://www.planomodelproducts.com)

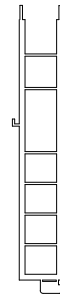
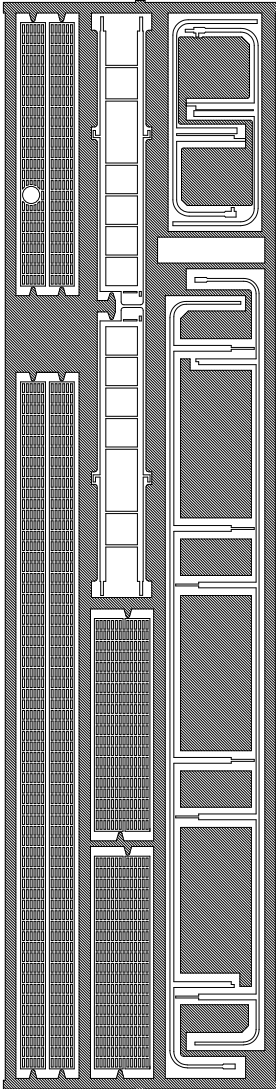
Thank you and happy modeling from

**Plano Model Products!**

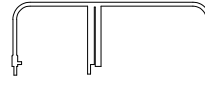
'B' end - End Platform



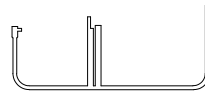
Parts as packaged  
Shaded area is fret holding  
parts together - discard when  
empty. Trim parts from fret to  
look like images to right.



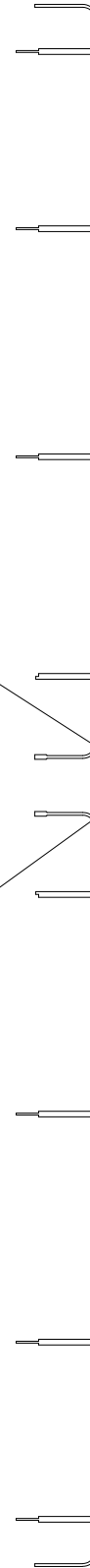
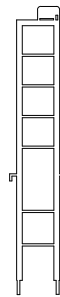
'B' end - End Ladder  
Notice mounting hole  
location



Bend 90 degrees  
at etched line



'A' end - End Ladder  
Notice mounting hole  
location



Long side walkways abut  
to end corner of center  
platform