

Plano Model Products #12141 - Gondola - Boxcar Ladders 4 Rungs - 18" Space - 18" Rungs - Offset End Ladder Mounts

Fill any holes and/or remove plastic ladders from your model.

About the drill templates - These template spacings are all the same. We supplied extras should they be needed. The "V" points to a line that signifies the bottom edge of the ladder. Cut out template close to "+" marks and position on car where new ladders will be mounted. Drill a #78 hole in each "+" mark.

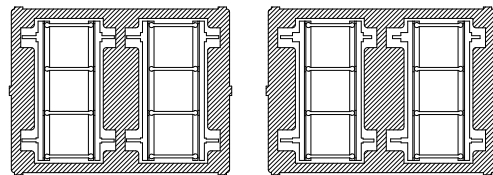
Before removing the ladders from the frets, look closely at both sides. You will notice one side has half etched fronts with a dividing lines to the sides. These are the fold lines. Remove a ladder from the fret, close to the fret so mounting pins remain on the ladder legs. Refer to image on the back as to what these should look like after trimming from fret. Carefully bend the ladders sides back, away from the half etched fronts, 90 degrees. A couple pair of tweezers should work, holding close the fold line and working slowly. The two end ladders have longer left hand legs to hold end ladder out to clear any 'ribs' on end of model

Insert mounting pins into drilled holes and cement in place. Repeat with remaining ladders. Touch up paint if needed.

Thank you for using our ladders on your model! See your local hobby supplier for all of our photo etched details or visit us online.

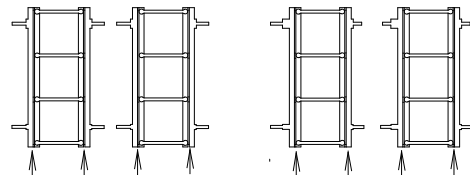
www.planomodelproducts.com

Frets as packaged. Discard shaded fret



Side Ladders
with all short
legs

Left hand legs on
these two end lad-
ders are longer
then inside legs



bend 90 degrees at these bend points